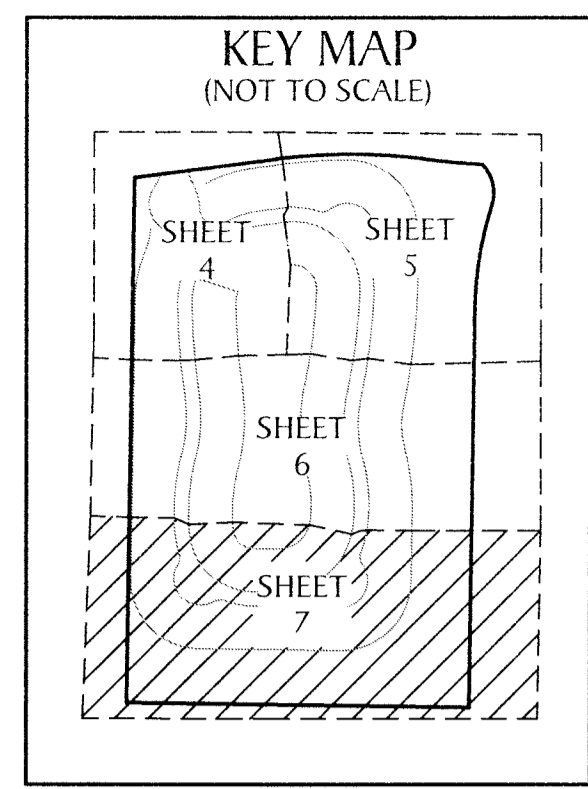
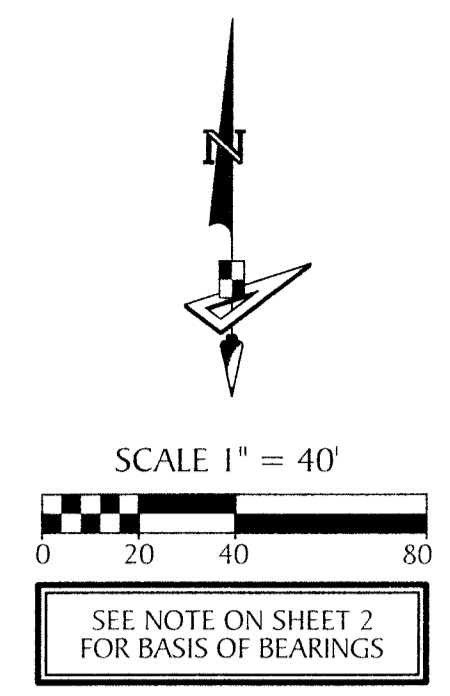


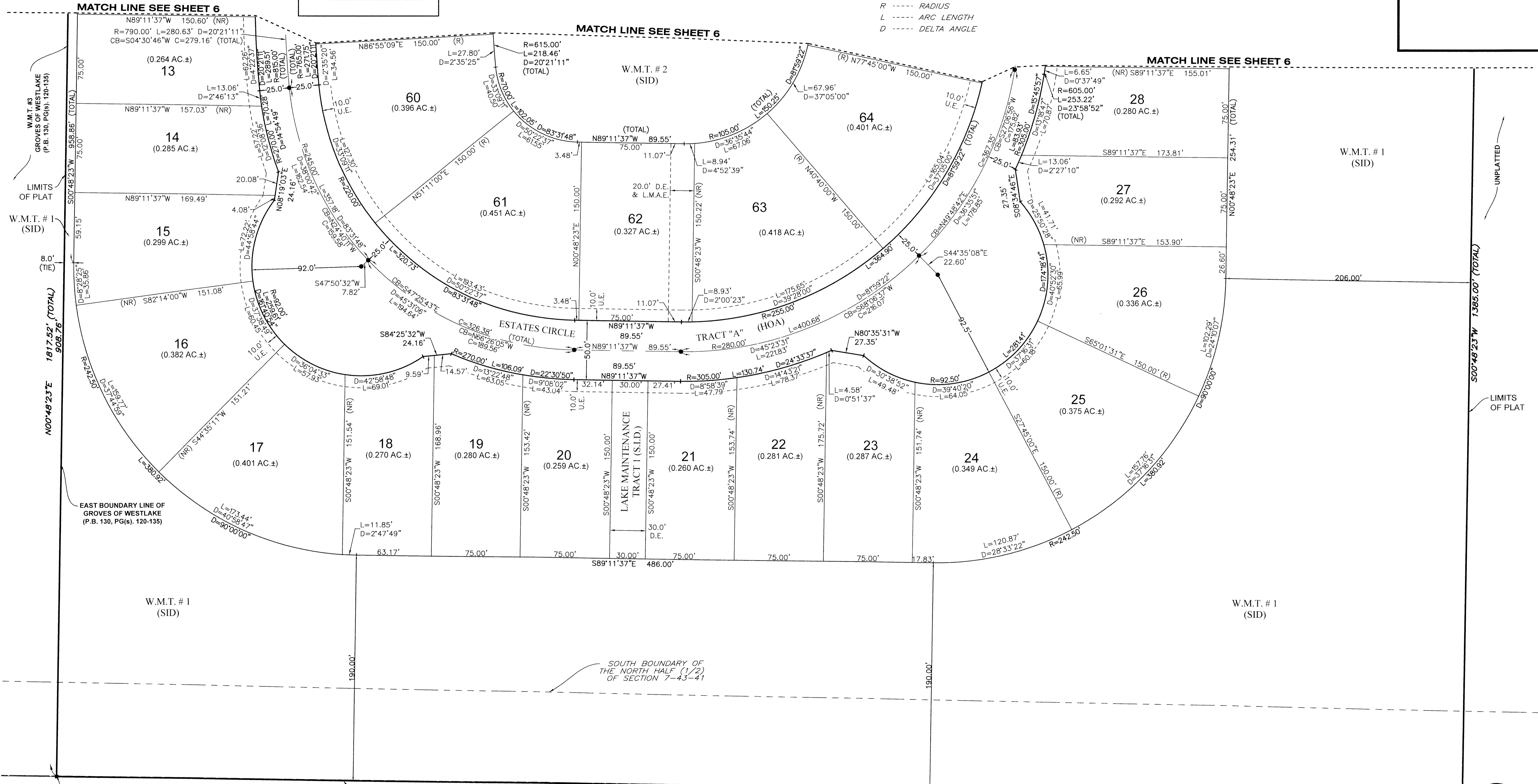
# ESTATES OF WESTLAKE

BEING A PORTION OF SECTION 7, TOWNSHIP 43 SOUTH, RANGE 41 EAST,  
CITY OF WESTLAKE, PALM BEACH COUNTY, FLORIDA.



| LEGEND  |   |
|---|---|
| P.O.B. ----- POINT OF BEGINNING                 | CB ----- CHORD BEARING  |
| P.O.C. ----- POINT OF COMMENCEMENT              | C ----- CHORD   |
| P.B. ----- PLAT BOOK                            | R/W ----- RIGHT-OF-WAY  |
| D.B. ----- DEED BOOK                            | (R) ----- RADIAL  |
| PG./PG(S) ----- PAGE(S)                         | (NR) ----- NON-RADIAL   |
| NAD ----- NORTH AMERICAN DATUM                  | HOA ----- HOMEOWNERS ASSOCIATION  |
| W.M.T. ----- WATER MANAGEMENT TRACT             | S.I.D. ----- SEMINOLE IMPROVEMENT DISTRICT                                      |
| O.S.T. ----- OPEN SPACE TRACT                   | PRM ----- PERMANENT REFERENCE MONUMENT  |
| P.B.C. ----- PALM BEACH COUNTY                  | ● ----- PERMANENT CONTROL POINT   |
| U.E. ----- UTILITY EASEMENT                     | □ ----- FOUND PERMANENT REFERENCE MONUMENT                                      |
| D.E. ----- DRAINAGE EASEMENT                    | ■ ----- SET 4"x4" CONCRETE MONUMENT WITH 2" ALUMINUM DISK STAMPED "PRM LB 7768" |
| L.M.A.E. ----- LAKE MAINTENANCE ACCESS EASEMENT |   |
| 7-43-41 ----- SECTION-TOWNSHIP-RANGE            |   |
| R ----- RADIUS                                  |   |
| L ----- ARC LENGTH                              |   |
| D ----- DELTA ANGLE                             |   |

114



UNPLATTED

LIMITS OF PLAT

1385.00' (TOTAL)

SE CORNER OF GROVES OF WESTLAKE (P.B. 130, PG(S). 120-135)

SOUTH BOUNDARY OF THE NORTH HALF (1/2) OF SECTION 7-43-41, AS FOUND MONUMENTED AND OCCUPIED, ALSO BEING CALLED OUT AS THE EAST - WEST QUARTER (1/4) SECTION LINE OF SAID SECTION 7 PER FINAL JUDGEMENT (CASE NO.: 73 1016 CA (L) 01 MacMILLAN)

**GeoPoint**  
Surveying, Inc.

4152 W. Blue Heron Blvd.  
Suite 105  
Riviera Beach, FL 33404

Phone: (561) 444-2720  
www.geopointsurvey.com  
Licensed Business Number LB 7768

Sheet No. 7 of 7 Sheets